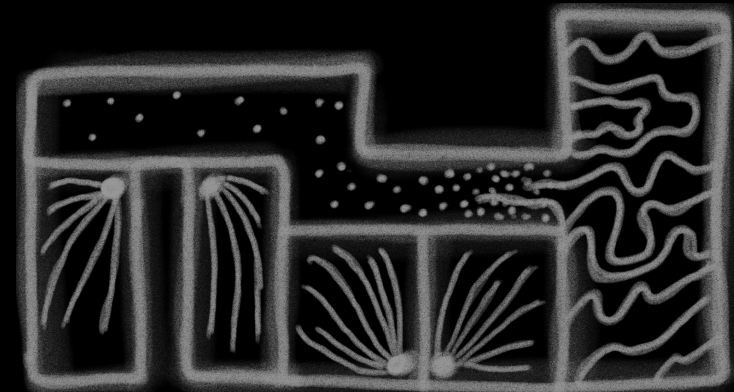


Lighting Portfolio

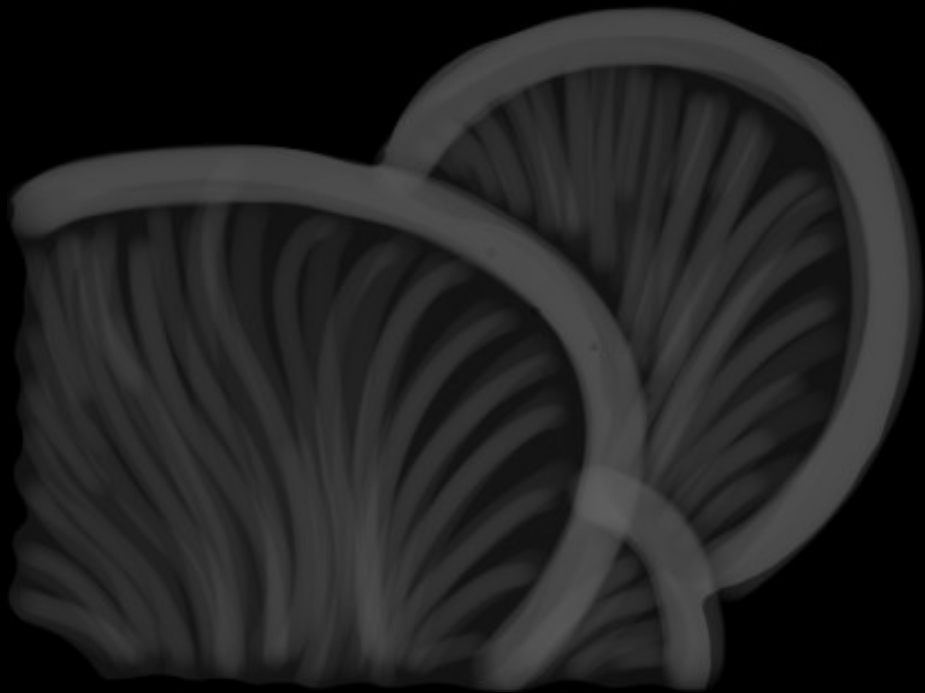
Jackson Hanus

Project: 2023 Howard Brandston Student Lighting Design Education Grant

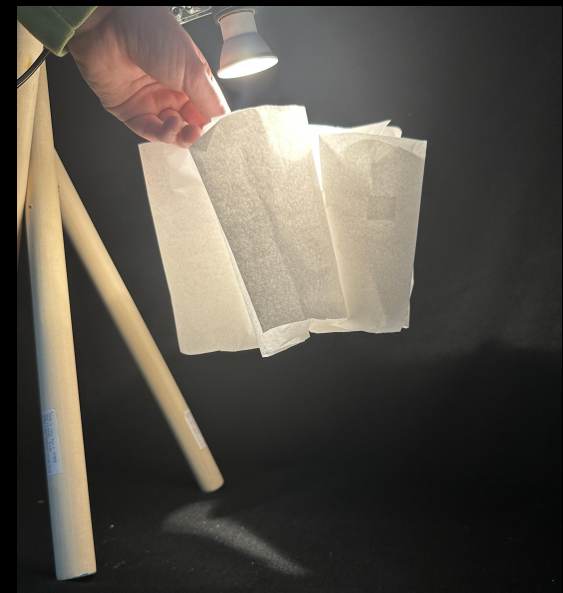
Oregon blossoms with diverse nature. The lighting design for the Portland School of Design building, reflects the study of art and draws inspiration from the distinct nature of Oregon. This lighting design conceptualizes the merging of nature and art as one artistic concept: **organic expression**. Organic expression in lighting design utilizes commonalities found in nature to create art that is as inspirational as nature itself. This concept is intentional yet provides a subjective experience for its audiences. For example, while one might view Van Gogh's *Starry Night* as the nighttime sky, another might see the rolling hills of the Plains because the painted lines illustrate both experiences. Much of Oregon's nature is anatomically sculpted from the same mold. Mushroom caps are drawn similarly to ocean waves, and the veins of a leaf are likened to the setting sun. The Portland School of Design's lighting is inspirational, personal, and services the essential functions of the space.



Floor Plan Design Concept

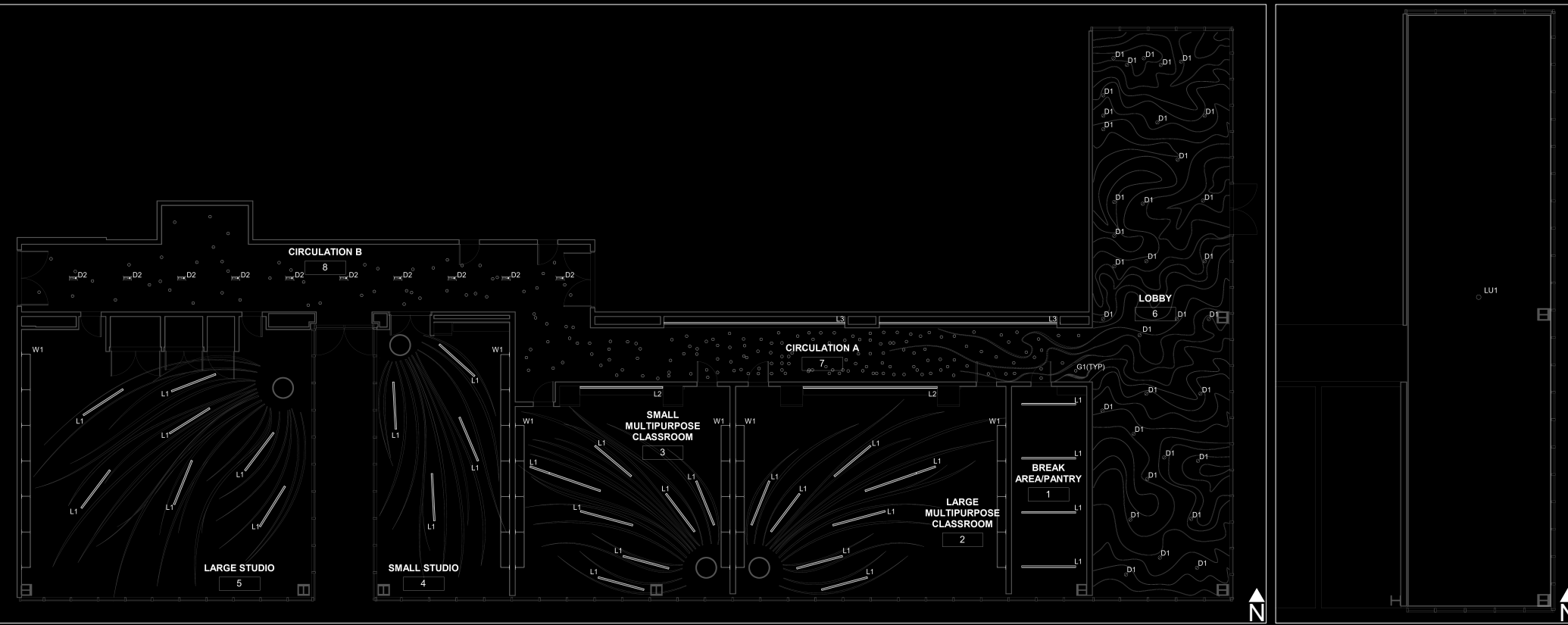


Mock-Up View from Below



Material Testing Set Up

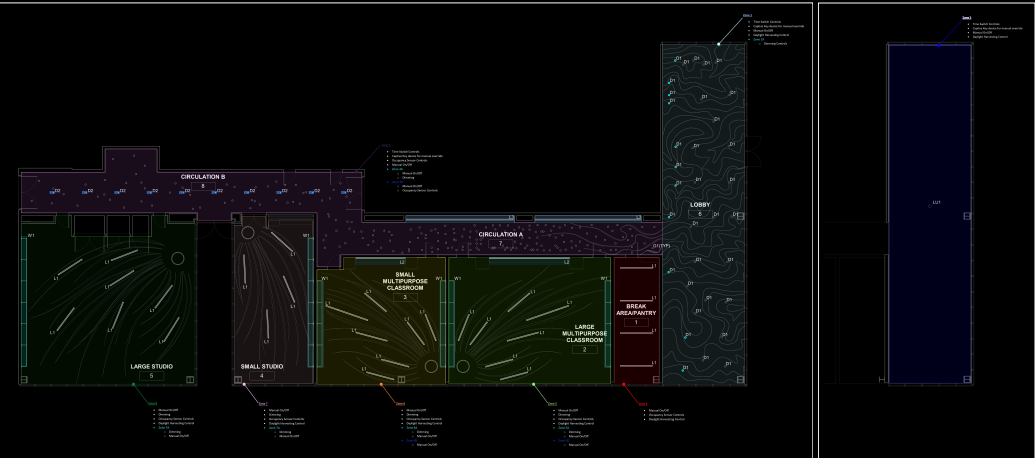
Reflected Ceiling Plans



First Floor

Luminous Ceiling

Lighting Control Diagrams



First Floor

Luminous Ceiling

Illuminance Calculations



Lobby

Corridor

Classroom

LUMINAIRE SCHEDULE											
TYPE MARKS	DESCRIPTION	MANUFACTURER	MODEL	LAMP	LUMENS	WATTAGE	CCT	CFI	VOLTAGE	MOUNTING	REMARKS
L1	1.5" APERTURE RECESSED LINEAR LED FIXTURE	IG LIGHTING	IG-1-BL-D1000-H90-356-UNV-DIM-FX-FEL	LED	12000 LM/FT	8.9 W/FT	3500 K	90+	120/277 V	RECESSED	-
L2	2"X 5" LINEAR LED DOWNLIGHT	LED LINEAR	CV-D10-50X-30X-90W-8-DS	LED	600 LM/FT	48.0 W/FT	3500 K	90	120/277 V	SURFACE	A,B
L3	EXTRUDED 3" RECESSED LINEAR WALL WASH	PINNACLE ARCHITECTURAL LIGHTING	EV3W-3500K-CONTINUOUS ROW-SF51-U-FSD-10-W	LED	411 LM/FT	10.3 W/FT	3500 K	90	120/277 V	RECESSED	-
D1	8" ROUND PENDANT CYLINDER	GOYAMA LIGHTING	EV08V1_15.93 WR WL LD 277 G210 PPM 80CRI	LED	3000 LM	47.1 W	3500 K	90	277 V	PENDANT	-
D2	2" DOWNLIGHT	GOYAMA LIGHTING	EV02_30.24 AR 15.50 M001 H050 18L 80CRI	LED	3500 LM	21.2 W	3500 K	90	120/277 V	RECESSED	-
G1	3" WHITE GLASS GLOBE PENDANT WITH 360 DEGREE ILLUMINATION	BLACKJACK LIGHTING	SB-GGS-WH-03-WH-30K-3W-SFS-3X	LED	133 LM	3 W	3000 K	90	120/277 V	CEILING MOUNTED	-
W1	LED WALL MOUNTED STRAIGHT RUN FIXTURE	PURE EDGE LIGHTING	PE-7W-2R-14-450-35K-8W	LED	133 LM/FT	7.3 W/FT	3500 K	95+	120/277 V	WALL MOUNTED	-
T1	LED TAPE STRIP FIXTURE	LUMIN	LS-SS-35K-30X-XXX	LED	133 LM/FT	1.4 W/FT	3500 K	97	120/277 V	SURFACE	A,B,C,D
LU1	20" X 84" LUMINOUS SURFACE POLYESTER LED FIXTURE	COOLEGE	SS-SM-R-HP-35-STD-DAL-E-U	LED	185 LM/FT	4.6 W/FT	3500 K	94	120/277 V	SURFACE/CEILING	A,B,C

REMARKS:
 A. PROVIDE ALL OTHER APPURTENANCES REQUIRED FOR A COMPLETE SYSTEM.
 B. REFER TO CUTSHEET SPECIFICATIONS FOR DRIVER TYPE. (0-10V DIMMABLE DRIVER WITH 120/277 VAC INPUT AND 24 VDC OUTPUT)
 C. REFER TO CUTSHEET SPECIFICATIONS FOR ADDITIONAL MOUNTING HARDWARE.
 D. REFER TO CUTSHEET SPECIFICATIONS FOR BOSQ-XX CHANNEL.
 E. COOLEGE LUMINOUS SURFACE FIXTURE IS A SPECIALIZED LIGHTING SYSTEM AND SERVICES ARE PROVIDED BY THE COOLEGE TEAM. SPECIFY 4' X 4' FIXTURES FOR LOBBY LUMINOUS SURFACE.



1. Lobby Looking North - Social Hour



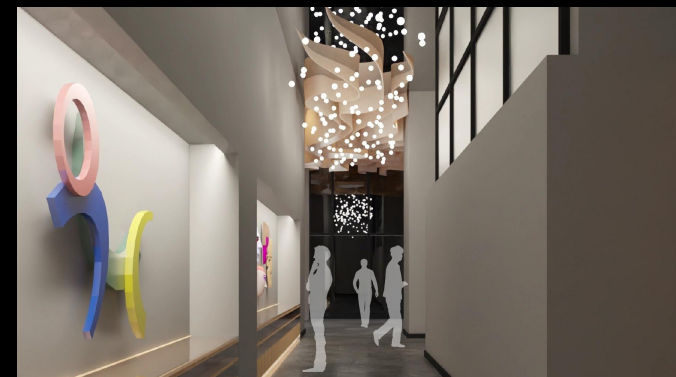
2. Lobby Looking North - Exhibition



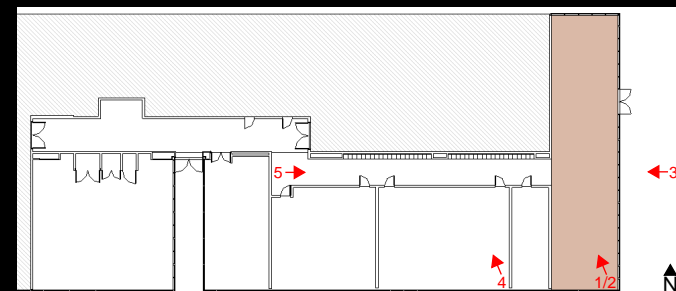
3. Exterior - Looking West



4. Typical Classroom/Studio Looking North



5. Corridor Looking East



Render Locations